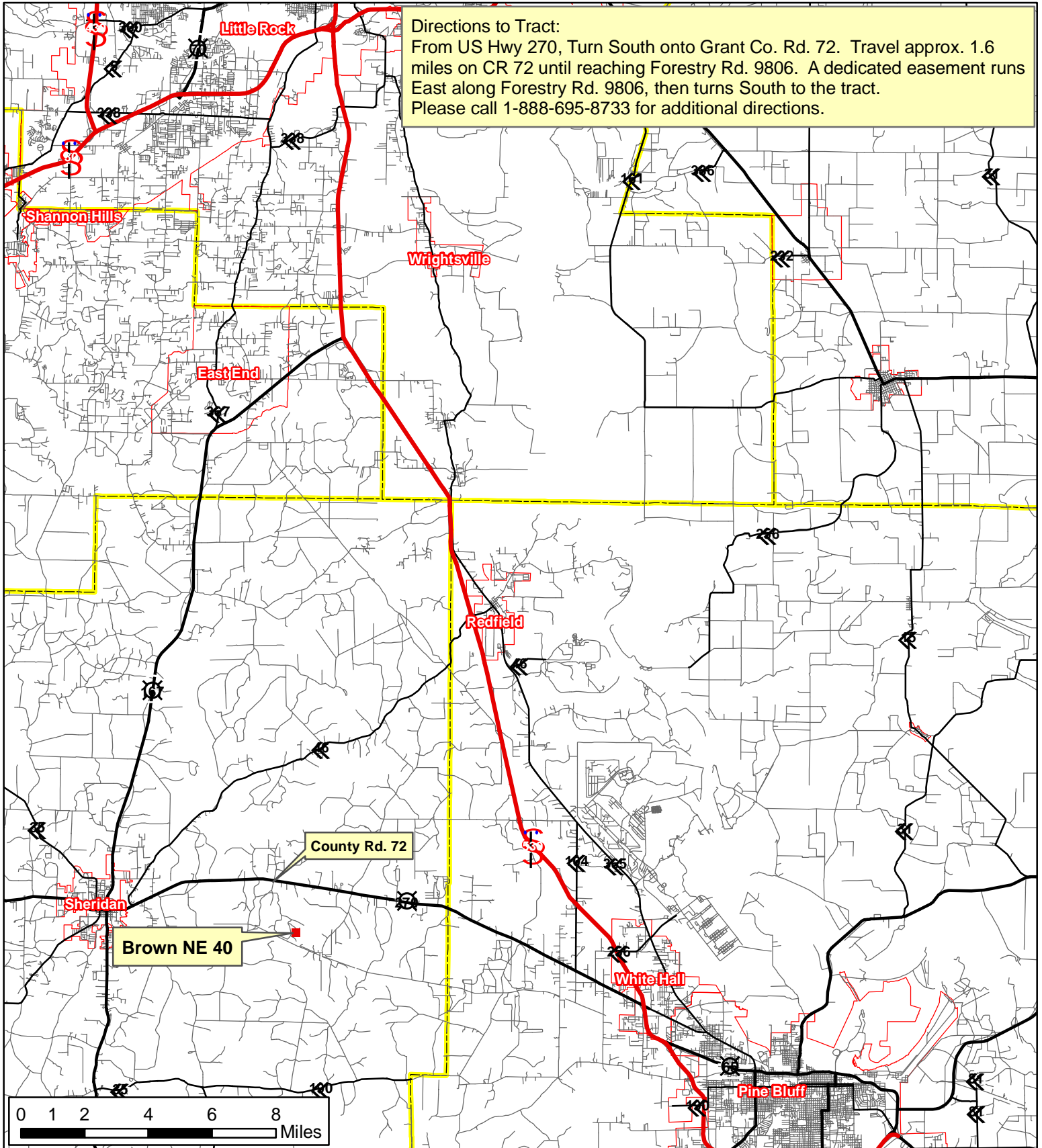


Brown NE 40

NE 1/4 SW 1/4, Section 10, Township 5 South, Range 12 West, Grant County, AR, 40 Acres +/-



Directions to Tract:

From US Hwy 270, Turn South onto Grant Co. Rd. 72. Travel approx. 1.6 miles on CR 72 until reaching Forestry Rd. 9806. A dedicated easement runs East along Forestry Rd. 9806, then turns South to the tract. Please call 1-888-695-8733 for additional directions.

Brown NE 40

County Rd. 72

±
Phone: 1-888-695-8733
www.forestryrealestate.com

DAVIS DUBOSE
FORESTRY & REAL ESTATE CONSULTANTS PLLC

This map and all information it contains is provided "AS IS," as a courtesy to potential buyers. Potential buyers should make their own determination regarding the accuracy of the information provided. Neither the seller, Davis DuBose Forestry & Real Estate Consultants PLLC (DDFREC), their subsidiaries, affiliates nor representatives warrant the accuracy, adequacy or completeness of any information contained herein regarding the property, its condition, boundaries, access, acreage, or timber stand information. DDFREC expressly disclaims liability for errors or omissions.